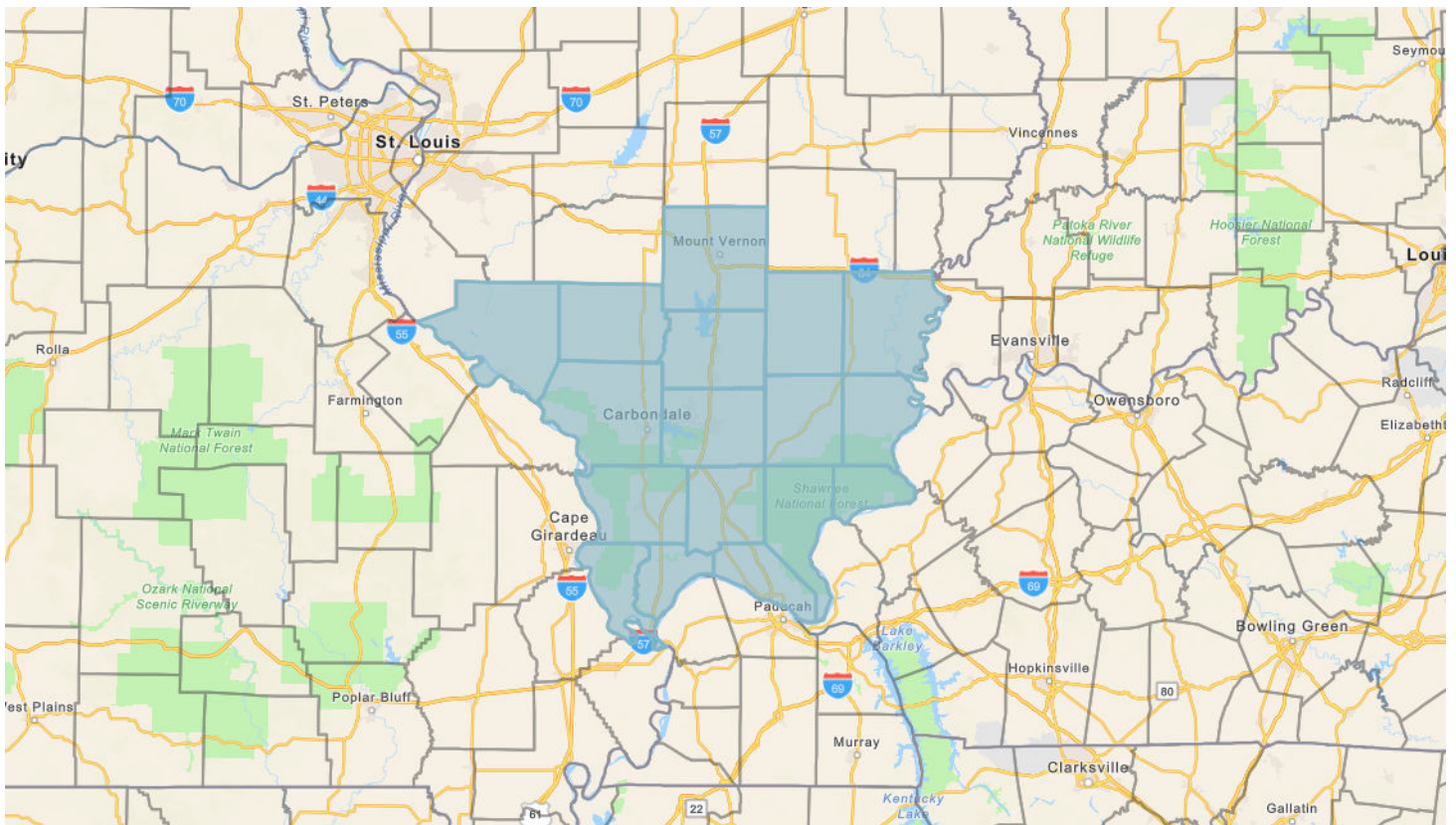


SI Now

What If 600 Tire Manufacturing Jobs in Southern Illinois



SI Now, NAICS 32621 - Tire Manufacturing (600 Workers)

SOC	Title	New Employer Demand	Empl (Place of Residence) ¹	Unempl ¹	Regional Avg Wage	National Avg Wage	Empl Extended	Unempl Extended	Potential Candidates per Opening
41-2031	Retail Salespersons	1	3,473	227	\$37,000	\$36,900	1,618	74	3,700
37-2011	Janitors and Cleaners, Except Maids and Housekeeping Cleaners	2	2,264	141	\$34,600	\$36,500	5,566	444	1,203
49-3023	Automotive Service Technicians and Mechanics	1	1,017	25	\$49,200	\$53,800	128	2	1,042
43-6014	Secretaries and Administrative Assistants, Except Legal, Medical, and Executive	2	1,974	56	\$42,100	\$46,700	3,668	171	1,015
53-7065	Stockers and Order Fillers	3	2,622	302	\$37,400	\$38,200	15,264	1,362	975
11-9199	Managers, All Other	1	949	22	\$105,200	\$142,200	1,110	39	971
13-1199	Business Operations Specialists, All Other	1	768	21	\$78,300	\$86,300			790
33-9032	Security Guards	1	711	50	\$36,700	\$39,100	270	24	761
11-3031	Financial Managers	1	689	11	\$119,400	\$172,500	931	29	700
15-1252	Software Developers	1	624	21	\$109,600	\$141,300			646
43-9061	Office Clerks, General	5	2,929	130	\$41,300	\$44,200	5,212	217	612
53-3032	Heavy and Tractor-Trailer Truck Drivers	4	2,146	121	\$53,600	\$57,300	1,382	87	567
43-3031	Bookkeeping, Accounting, and Auditing Clerks	3	1,570	33	\$45,300	\$51,000	1,577	54	534
43-4051	Customer Service Representatives	5	2,366	154	\$41,900	\$44,200	2,262	144	504
53-3033	Light Truck Drivers	2	923	53	\$47,700	\$48,800	763	62	488
15-1232	Computer User Support Specialists	1	462	12	\$58,100	\$66,600	328	12	474
13-1161	Market Research Analysts and Marketing Specialists	1	421	32	\$62,700	\$82,400	1,471	49	454
13-1082	Project Management Specialists	1	438	11	\$82,400	\$106,200			449

SI Now, NAICS 32621 - Tire Manufacturing (600 Workers)

SOC	Title	New Employer Demand	Empl (Place of Residence) ¹	Unempl ¹	Regional Avg Wage	National Avg Wage	Empl Extended	Unempl Extended	Potential Candidates per Opening
11-1021	General and Operations Managers	9	3,547	100	\$97,600	\$129,000	4,021	104	405
43-1011	First-Line Supervisors of Office and Administrative Support Workers	3	1,138	30	\$60,900	\$70,100	1,968	58	389
11-2022	Sales Managers	1	373	6	\$130,400	\$157,300	1,363	30	380
11-1011	Chief Executives	1	364	6	\$191,600	\$254,900	1,225	27	370
47-2111	Electricians	2	654	20	\$78,700	\$69,100	1,220	30	337
15-1211	Computer Systems Analysts	1	297	6	\$99,800	\$114,500	558	19	304
11-3021	Computer and Information Systems Managers	1	295	7	\$135,600	\$179,900	641	14	302
13-1151	Training and Development Specialists	1	263	6	\$67,800	\$73,200	2,686	89	269
53-1047	First-Line Supervisors of Transportation and Material Moving Workers, Except Aircraft Cargo Handling Supervisors	2	496	13	\$55,500	\$64,700	5,392	185	255
53-7064	Packers and Packagers, Hand	3	660	86	\$36,100	\$35,700	1,890	140	249
11-3012	Administrative Services Managers	1	237	3	\$95,000	\$121,100	6,203	169	241
51-4121	Welders, Cutters, Solderers, and Brazers	2	452	24	\$45,800	\$54,100	3,873	229	238
15-1244	Network and Computer Systems Administrators	1	218	4	\$79,400	\$103,900	454	11	222
51-9161	Computer Numerically Controlled Tool Operators	1	212	9	\$44,100	\$51,200	412	14	221
13-2011	Accountants and Auditors	4	857	15	\$68,800	\$90,800	320	13	218
11-3121	Human Resources Managers	1	194	5	\$116,200	\$151,200	5,547	144	199
13-1071	Human Resources Specialists	3	569	26	\$65,200	\$76,600	1,602	45	199

SI Now, NAICS 32621 - Tire Manufacturing (600 Workers)

SOC	Title	New Employer Demand	Empl (Place of Residence) ¹	Unempl ¹	Regional Avg Wage	National Avg Wage	Empl Extended	Unempl Extended	Potential Candidates per Opening
53-7062	Laborers and Freight, Stock, and Material Movers, Hand	20	3,433	371	\$37,800	\$40,400			190
11-3071	Transportation, Storage, and Distribution Managers	1	174	6	\$94,600	\$114,100	2,688	77	180
41-1012	First-Line Supervisors of Non-Retail Sales Workers	1	167	4	\$78,300	\$100,800	1,651	45	171
49-9099	Installation, Maintenance, and Repair Workers, All Other	1	151	7	\$54,300	\$51,600			157
49-9071	Maintenance and Repair Workers, General	12	1,740	87	\$51,300	\$51,100	376	10	152
13-1051	Cost Estimators	1	145	3	\$73,400	\$80,100	1,240	22	148
13-1081	Logisticians	1	142	3	\$63,200	\$84,400	259	7	145
49-1011	First-Line Supervisors of Mechanics, Installers, and Repairers	4	549	8	\$72,500	\$81,300	799	22	139
11-3013	Facilities Managers	1	123	2	\$92,100	\$110,800			125
51-6031	Sewing Machine Operators	1	115	7	\$32,600	\$35,600	89	12	122
51-9111	Packaging and Filling Machine Operators and Tenders	4	429	33	\$38,100	\$41,800	6,289	541	115
51-4041	Machinists	4	401	8	\$50,000	\$55,000	432	22	102
51-5112	Printing Press Operators	1	96	5	\$40,900	\$46,000	113	8	101
17-3023	Electrical and Electronic Engineering Technologists and Technicians	1	99	0	\$64,000	\$75,400	892	32	99
53-7051	Industrial Truck and Tractor Operators	7	620	47	\$46,700	\$46,600	5,098	465	95
41-4012	Sales Representatives, Wholesale and Manufacturing, Except Technical and Scientific Products	11	984	16	\$63,200	\$81,700	75	3	91
51-9124	Coating, Painting, and Spraying	2	169	11	\$47,700	\$49,600	2,975	168	90

SI Now, NAICS 32621 - Tire Manufacturing (600 Workers)

SOC	Title	New Employer Demand	Empl (Place of Residence) ¹	Unempl ¹	Regional Avg Wage	National Avg Wage	Empl Extended	Unempl Extended	Potential Candidates per Opening
	Machine Setters, Operators, and Tenders								
17-2071	Electrical Engineers	1	86	2	\$105,800	\$119,700	640	17	87
13-1023	Purchasing Agents, Except Wholesale, Retail, and Farm Products	3	241	4	\$63,600	\$78,100	419	9	82
41-4011	Sales Representatives, Wholesale and Manufacturing, Technical and Scientific Products	1	73	1	\$111,300	\$115,400	984	16	74
43-5071	Shipping, Receiving, and Inventory Clerks	10	700	36	\$42,400	\$43,400	5,898	544	74
19-5011	Occupational Health and Safety Specialists	1	70	0	\$88,800	\$88,400	3,157	46	70
49-9044	Millwrights	1	65	1	\$63,500	\$66,800	2,460	102	66
51-4111	Tool and Die Makers	2	128	3	\$55,600	\$63,500	509	14	66
51-4033	Grinding, Lapping, Polishing, and Buffing Machine Tool Setters, Operators, and Tenders, Metal and Plastic	2	124	7	\$42,500	\$44,900	894	42	65
11-9041	Architectural and Engineering Managers	2	128	0	\$150,200	\$169,600	746	18	64
51-4031	Cutting, Punching, and Press Machine Setters, Operators, and Tenders, Metal and Plastic	5	293	11	\$39,400	\$45,100	3,945	248	61
17-2141	Mechanical Engineers	3	151	4	\$95,400	\$107,300	423	12	52
17-2199	Engineers, All Other	1	50	1	\$102,000	\$117,600	1,488	37	51
51-2099	Assemblers and Fabricators, All Other	5	221	13	\$41,500	\$42,900			47
17-3013	Mechanical Drafters	1	42	3	\$63,800	\$70,000	206	7	44
17-3029	Engineering Technologists	1	43	2	\$69,100	\$74,500	1,136	34	44

SI Now, NAICS 32621 - Tire Manufacturing (600 Workers)

SOC	Title	New Employer Demand	Empl (Place of Residence) ¹	Unempl ¹	Regional Avg Wage	National Avg Wage	Empl Extended	Unempl Extended	Potential Candidates per Opening
	and Technicians, Except Drafters, All Other								
51-9011	Chemical Equipment Operators and Tenders	2	84	3	\$58,300	\$58,100	122	5	44
43-5061	Production, Planning, and Expediting Clerks	6	239	6	\$55,600	\$58,800	841	23	41
51-2092	Team Assemblers	37	1,264	73	\$41,800	\$43,300	328	25	36
51-9021	Crushing, Grinding, and Polishing Machine Setters, Operators, and Tenders	1	34	1	\$47,300	\$48,500	654	20	35
53-7063	Machine Feeders and Offbearers	1	33	1	\$46,200	\$41,800	2,285	220	34
51-9198	Helpers--Production Workers	6	185	12	\$38,300	\$38,400	3,882	302	33
11-3051	Industrial Production Managers	7	217	7	\$119,600	\$126,800	5,350	110	32
17-3026	Industrial Engineering Technologists and Technicians	3	87	3	\$61,900	\$67,900	780	19	30
49-2094	Electrical and Electronics Repairers, Commercial and Industrial Equipment	1	27	2	\$66,300	\$72,300	792	16	30
51-1011	First-Line Supervisors of Production and Operating Workers	28	799	22	\$68,500	\$73,900	693	29	29
51-9061	Inspectors, Testers, Sorters, Samplers, and Weighers	29	782	36	\$46,300	\$50,900	2,128	168	28
49-3093	Tire Repairers and Changers	5	131	4	\$36,800	\$37,800	1,697	162	27
17-2112	Industrial Engineers	11	281	9	\$95,300	\$105,300	619	16	26
49-9041	Industrial Machinery Mechanics	14	361	6	\$64,200	\$66,100	3,061	119	26
19-2031	Chemists	1	25	1	\$85,400	\$96,300	72	2	26

SI Now, NAICS 32621 - Tire Manufacturing (600 Workers)

SOC	Title	New Employer Demand	Empl (Place of Residence) ¹	Unempl ¹	Regional Avg Wage	National Avg Wage	Empl Extended	Unempl Extended	Potential Candidates per Opening
51-4081	Multiple Machine Tool Setters, Operators, and Tenders, Metal and Plastic	7	171	1	\$43,500	\$45,100	406	29	25
51-4035	Milling and Planing Machine Setters, Operators, and Tenders, Metal and Plastic	1	23	0	\$54,300	\$52,200	752	25	23
17-3027	Mechanical Engineering Technologists and Technicians	2	41	2	\$68,400	\$69,000	399	15	21
51-4034	Lathe and Turning Machine Tool Setters, Operators, and Tenders, Metal and Plastic	1	21	0	\$50,900	\$51,100	1,400	59	21
51-9199	Production Workers, All Other	15	283	22	\$45,500	\$41,800			20
51-4072	Molding, Coremaking, and Casting Machine Setters, Operators, and Tenders, Metal and Plastic	17	298	19	\$44,100	\$42,500	474	36	19
51-4023	Rolling Machine Setters, Operators, and Tenders, Metal and Plastic	2	34	1	\$49,400	\$51,900	983	52	18
51-4199	Metal Workers and Plastic Workers, All Other	1	16	1	\$45,000	\$45,200			17
19-4031	Chemical Technicians	2	32	1	\$61,700	\$59,900	395	14	16
51-4071	Foundry Mold and Coremakers	1	14	1	\$45,000	\$44,700	8	0	15
51-9023	Mixing and Blending Machine Setters, Operators, and Tenders	15	192	4	\$45,900	\$48,500	521	19	13
51-4021	Extruding and Drawing Machine Setters, Operators, and	8	90	4	\$48,300	\$45,700	5	0	12

SI Now, NAICS 32621 - Tire Manufacturing (600 Workers)

SOC	Title	New Employer Demand	Empl (Place of Residence) ¹	Unempl ¹	Regional Avg Wage	National Avg Wage	Empl Extended	Unempl Extended	Potential Candidates per Opening
	Tenders, Metal and Plastic								
51-6091	Extruding and Forming Machine Setters, Operators, and Tenders, Synthetic and Glass Fibers	1	10	2	\$43,300	\$45,900	188	12	11
51-9197	Tire Builders	80	491	125	\$50,200	\$51,100			8
51-9051	Furnace, Kiln, Oven, Drier, and Kettle Operators and Tenders	4	28	1	\$48,200	\$49,300			7
51-9195	Molders, Shapers, and Casters, Except Metal and Plastic	7	49	3	\$49,600	\$44,500	8,929	679	7
51-9032	Cutting and Slicing Machine Setters, Operators, and Tenders	13	88	7	\$48,700	\$44,800	1,332	78	7
51-6063	Textile Knitting and Weaving Machine Setters, Operators, and Tenders	1	6	0	\$37,000	\$38,400	10	1	6
51-9041	Extruding, Forming, Pressing, and Compacting Machine Setters, Operators, and Tenders	73	377	23	\$39,000	\$44,500	549	41	5
51-9192	Cleaning, Washing, and Metal Pickling Equipment Operators and Tenders	1	5	0	\$51,600	\$41,600	1,508	122	5
49-9043	Maintenance Workers, Machinery	5	23	1	\$50,700	\$60,400	63	1	5
17-2131	Materials Engineers	1	4	0	\$89,000	\$112,100	305	10	4
51-9191	Adhesive Bonding Machine Operators and Tenders	3	8	2	\$49,200	\$43,000	3,814	261	3
51-9031	Cutters and Trimmers, Hand	2	5	0	\$37,800	\$40,300	8	1	2

Source: [JobsEQ®](#)

1. Occupation employment and unemployment are place-of-residence data--that is, referring to workers who reside in the named locality.

Data as of 2023Q4 unless noted otherwise

Note: Figures may not sum due to rounding.

Column Glossary

SOC	The Standard Occupational Classification code.
Title	The name of the Standard Occupational Classification code.
New Employer Demand	Estimated number of employees needed in the specified occupation by the incoming firm.
Empl (Place of Residence) ¹	Estimated number of workers currently employed in the occupation in the region by residence.
Unempl ¹	Estimated number of workers unemployed in the occupation in the region by residence.
Regional Avg Wage	Average wage for the selected occupation in the region.
National Avg Wage	Average wage for selected occupation in the nation.
Empl Extended	Regional workers meeting the following three criteria: • Are currently employed. • Have similar skills to the specified occupation (though may need additional training and/or certification to meet the specified occupation's requirements). • Current wages are no more than 10% higher than average wages of the specified occupation.
Unempl Extended	Same as Employment Extended except these workers are currently unemployed.
Potential Candidates per Opening	The ratio of potential candidates (employed plus unemployed) to the new employer demand. The coloring reflects varying ratio levels, red-orange-yellow-green, with the former representing short labor supplies and the lattermost reflecting generally ample supply. (The threshold for an "ample" supply varies industry to industry and occupation to occupation, but a general threshold of "50" is used in JobsEQ to denote the green level of generally ample supply.)